

# OLI eBIKE SYSTEMS

-

## SIDE VISION DISPLAY – user manual



### SUMMARY

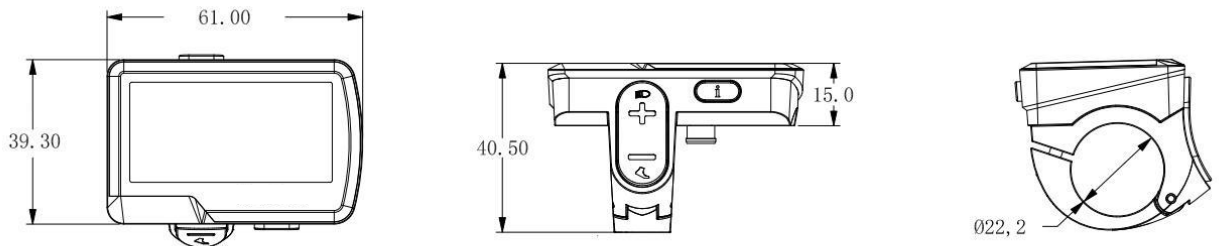
1. SPECIFICATION
2. DIMENSIONS
3. WARRANTY
4. OPERATIVE BUTTONS
5. SWITCH ON AND OFF THE SYSTEM
6. CHANGE ASSISTANCE LEVEL
7. READ RIDE INFORMATIONS
8. ACCESS AND OPERATE THE MENU
9. WALK MODE
10. OPERATE LIGHTS
11. ERRORS

## 1) Specifications

- 36V Power Supply
- Rated working current :22m
- Operating temperature: -20°C~ 60°C
- Storage temperature: -30°C~ 70°C
- Water resistance: IP66

## 2) Dimensions

Expressed in mm



## 3) Warranty

- Warranty will be valid only for products used in normal usage conditions.
- Warranty is valid for 24 months after the shipment or delivery to customers

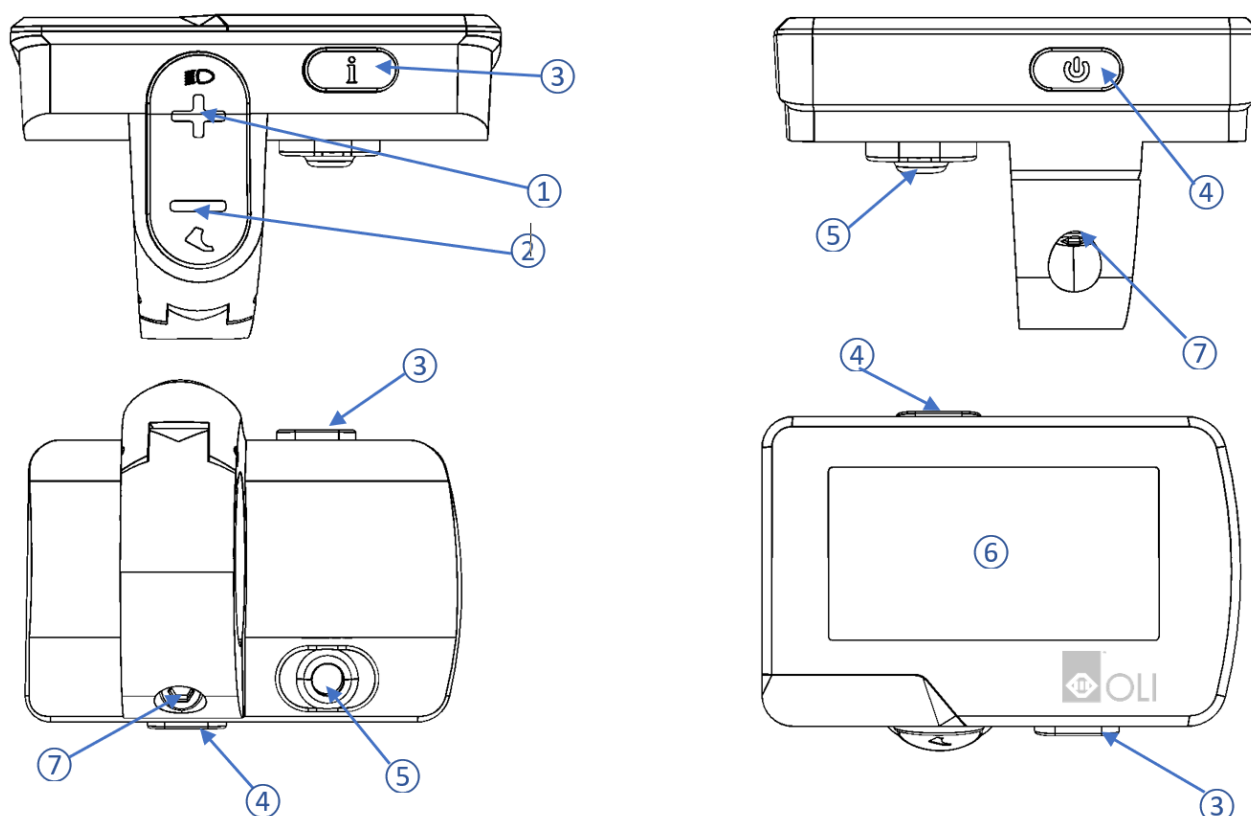
**The following cases do not belong to our warranty scope.**

1. The display is demolished
2. The damage of the display is caused by wrong installation or operation
3. If the display has been opened or attempted to open
4. Wire of the display is broken
5. The fault or damage of the display is caused by the force majeure (incident, fire, immersion in liquid, etc.)
6. Beyond Warranty period.

### Warnings

- Use the display with caution. Don't attempt to release or link the connector when battery is on power
- Try to avoid hitting the display
- Don't modify system parameters to avoid parameter disorder
- Contact your local Service Center when error code appears

## 4) Operative buttons



### ① +

- SHORT PRESS: increases assistance level
- LONG PRESS: turns lights on/off

### ② -

- SHORT PRESS: decreases assistance level
- HOLD PRESS: activates walk mode. Pushes the bike at 5km/h

### ③ i

- SHORT PRESS: cycles through ride's information
- LONG PRESS: enters menu

### ④ ⏻


- SHORT PRESS: switch on the system.
- LONG PRESS: switch off the system

### ⑤ CONNECTOR'S PLUG

### ⑥ DISPLAY

### ⑦ 2.5mm CLAMP SCREW

## 5) Switch on and off the system

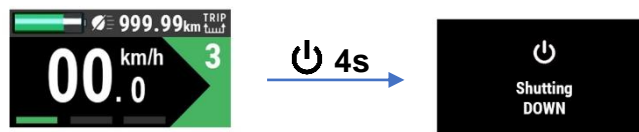
System is switched **ON** by pressing button ④  for 2 seconds.

Loading page shows the OLI eBike Systems logo.

The system turns on by default on assistance level 3, but it might be there variation according to bike manufacture's specifications.



System is switched **OFF** by pressing ④ button for 4 seconds



## 6) Change assistance level

Each short press of button **+** ① increases assistance level by 1 step

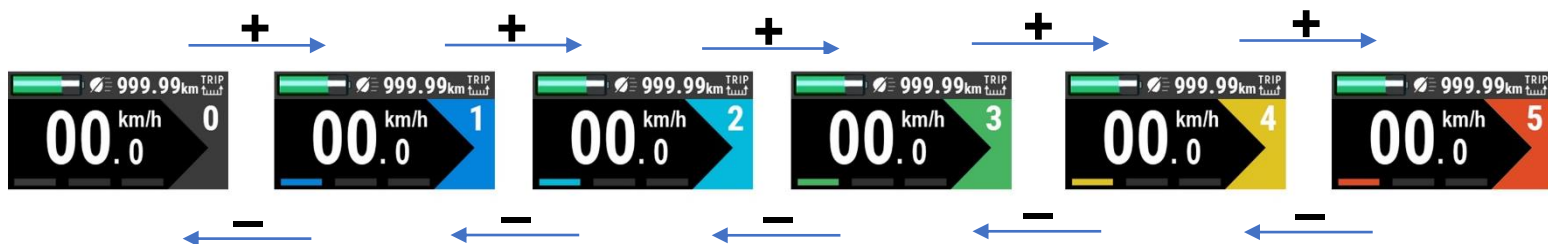
Each short press of button **-** ② decreases assistance level by 1 step

Every level has different setups defined by the bicycle manufacturer.

This may include variation on:

- Maximum motor's torque
- Percentage of increased power
- Reactiveness of the power supply

Please refer to your bicycle manufacturer for further details



## 7) Read ride information

By short clicking button **i** ③, ride's information cycle in the top-right corner of the display.

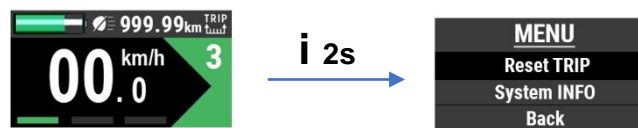
Shown information are:

- Trip since last erase
- Ride time since last erase
- Odometer



## 8) Access and operate menu

To access the system's menu, hold press button **i** ③



Inside the **MENU**, the sub-menu can be selected by using the **+** ① and **-** ② buttons

**TRIP** information can be reset by pressing **i** ③ button



**System INFO** contains important information about:

- HMI and motor's firmware version
- Battery's voltage
- Average consumption in Wh/km

System INFO	
FIRMWARE Vers.	Batt. VOLTAGE
	39.5V
HMI: 3.03.000	Consumption
Motor: 2.04.000	00.0 Wh/Km

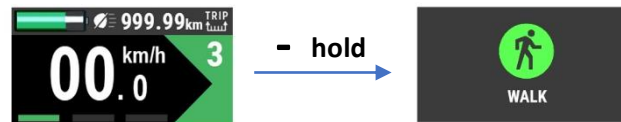
Select **BACK** and press **i** ③ button to exit the MENU

## 9) Walk mode

To help pushing the bike uphill while walking, the system features a **WALK MODE** that pushes the bike up to 5km/h without the need of pedalling.


To operate the WALK MODE, hold press button  ②

The system remains in WALK MODE until button  ② is released

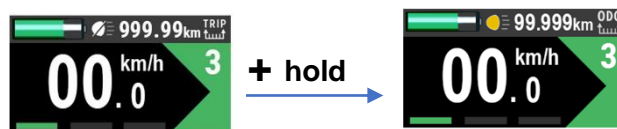


Walk mode function may only be used when pushing the E-bike. Be aware of danger of injury when bike wheels do not have ground contact while using the Walk mode function. Do not use Walk mode when you are riding the bike.

## 10) Operate lights

Lights are switched on and off by hold pressing the  ① button.

When lights are on, the icon on the display turn into yellow.



## 11) Errors

In case of a System's error or failure, the following page is shown



\*example

Please refer to the error list to find the solution.

If the error persists after restarting the system, please contact your local Service Center for support.